

Section : Chassis/
Power Train
Ref. No. : CP-0015
Date : Jul., 2000
Page : 1 of 4

Area Application : USA/Canada, Europe, General, G.C.C. Countries, Australia

Model Name : ALL MODELS

Model Code : ALL

Subject : Brake Pad Clicking Noise

To prevent the clicking noise* from the front and rear disc brakes, the new disc brake caliper grease has been available.

*: This is the condition that striking sound from the brake pads occurs after repeating the braking when forwarding, at the time of first braking when backwarding or in case of the reverse.

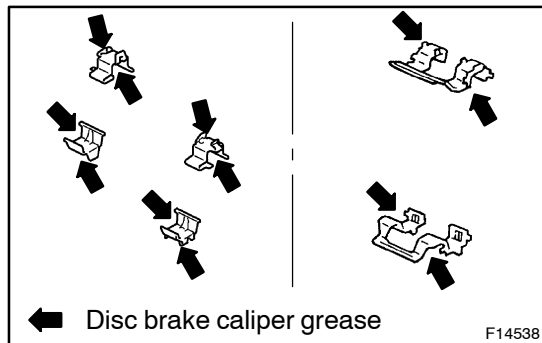
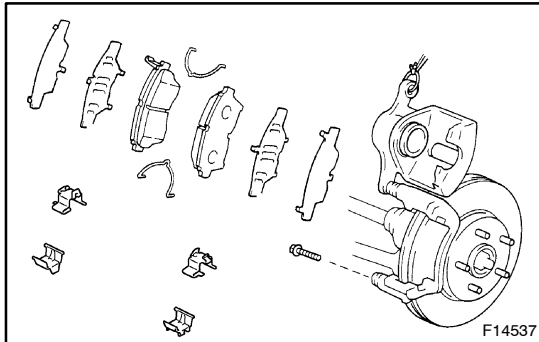
Part No. Information :

Part Number	Part Name
08887-80609	Disc Brake Caliper Grease (50 g per tube)

Application Procedures :

There are two types of brake calipers: Floating type and opposed type.

Check the type of the brake caliper installed on the vehicle by removing the wheel assembly.



Floating Type Brake Caliper

(a) Lift up or remove the brake caliper and suspend it securely.

HINT:

Do not disconnect the flexible hose from the brake caliper.

(b) w/ anti-squeal spring:

Remove the anti-squeal springs.

(c) Remove the brake pads with anti-squeal shims.

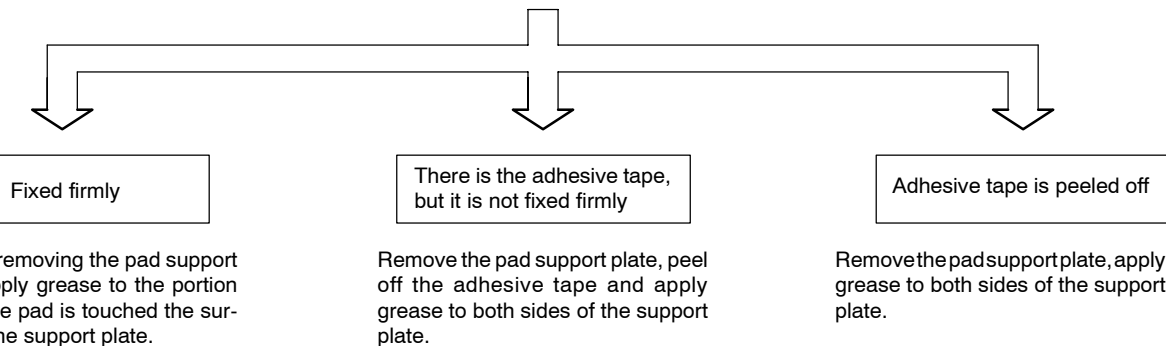
(d) Remove the pad support plates from the torque plate. Then get rid of dust on the pad support plates, torque plates and brake pads.

(e) Apply the disc brake caliper grease to both sides of the pad support plates.

NOTICE:

- If the pad support plate is fixed to the torque plate with adhesive tape, do the operation according to the following flow chart.

Check whether or not the pad support plate and the torque plate are fixed firmly with the adhesive tape.



Fixed firmly

Without removing the pad support plate, apply grease to the portion where the pad is touched the surface of the support plate.

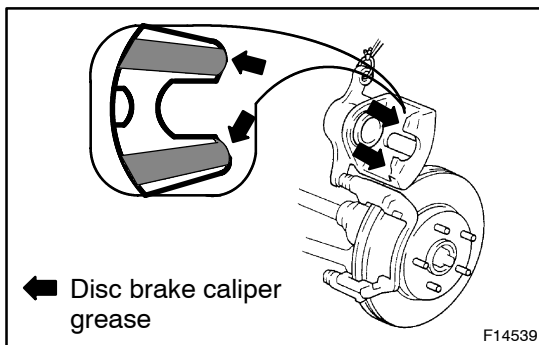
There is the adhesive tape, but it is not fixed firmly

Remove the pad support plate, peel off the adhesive tape and apply grease to both sides of the support plate.

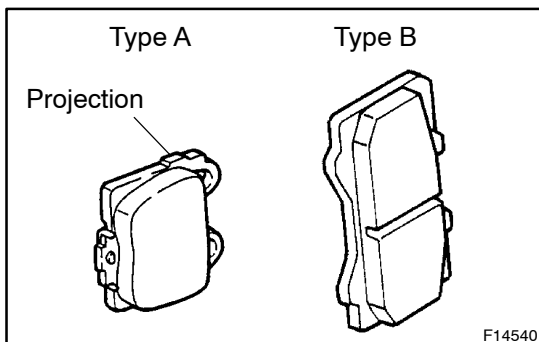
Adhesive tape is peeled off

Remove the pad support plate, apply grease to both sides of the support plate.

- No grease should be applied to the friction surfaces of the pads or the disc.



- (f) Apply the disc brake caliper grease to the areas indicated in the illustration.
- (g) Install the brake pads with the anti-squeal shims.
- (h) w/ anti-squeal spring:
Install the anti-squeal springs.
- (i) Press in the piston firmly and install the brake caliper.
- (j) Install the wheel assembly.



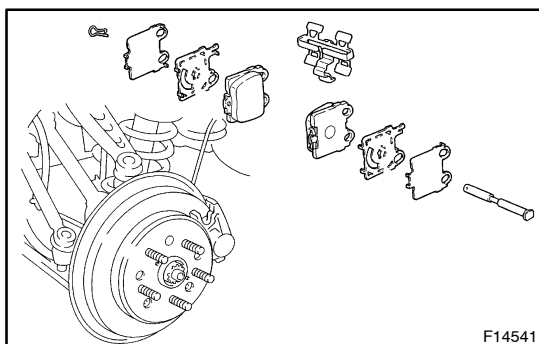
Opposed Type Brake Caliper

HINT:

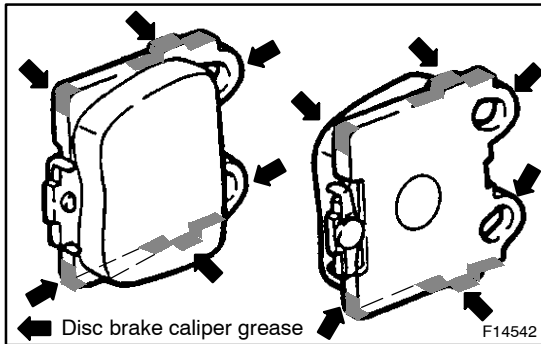
There are two types of brake pads:

Type A: There is projection on the upper and lower side of brake pad.

Type B: The upper and lower side of the brake pad are flat.



1. In case of type A
 - (a) Remove the anti-squeal spring, clip and pad guide pin.
 - (b) Remove the brake pads with the anti-squeal shims.
 - (c) Get rid of dust on the brake pads.

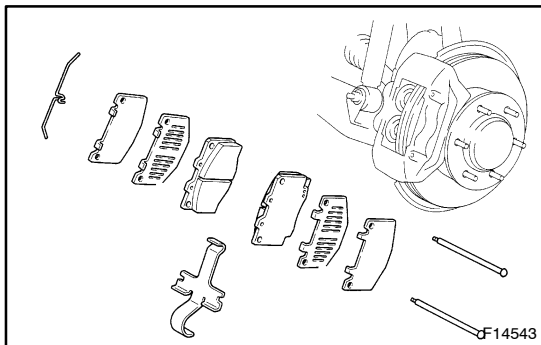


- (d) Apply the disc brake caliper grease to the areas indicated in the illustration.

NOTICE:

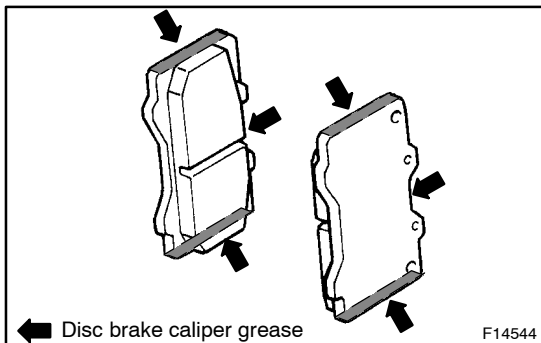
No grease should be applied to the friction surfaces of the pads or the disc.

- (e) Install the brake pads with the anti-squeal shims.
(f) Install the pad guide pin, clip and anti-squeal spring.
(g) Install the wheel assembly.



2. In case of type B

- (a) Remove the clip, pins and anti-rattle spring/pad retainer clip.
(b) Remove the brake pads with the anti-squeal shims.
(c) Get rid of dust on the brake pads.



- (d) Apply the disc brake caliper grease to the areas indicated in the illustration.

NOTICE:

No grease should be applied to the friction surfaces of the pads or the disc.

- (e) Install the brake pads with the anti-squeal shims.
(f) Install the pad guide pin, clip and anti-squeal spring.
(g) Install the wheel assembly.