



Technical Service BULLETIN

November 28, 2005

Title: SHORT PIN INSTALLATION DURING PDS

Models: '06 RAV4



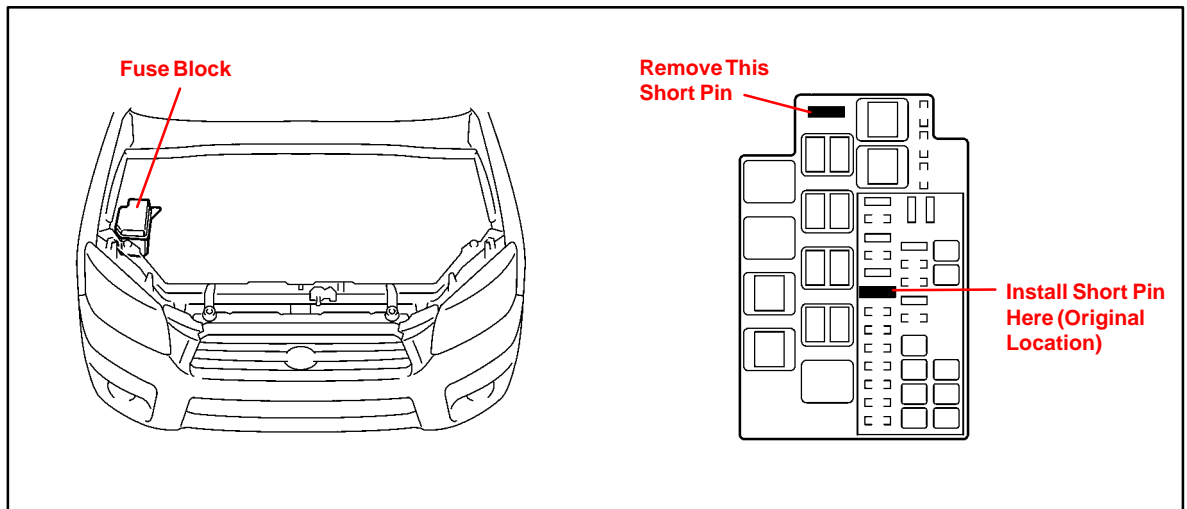
PRE-DELIVERY SERVICE
PD088-05

Introduction To minimize battery discharge during transportation and storage, the Short Pin has been removed at the assembly plant and temporarily stored in the engine compartment Fuse Block. During Pre-Delivery Service (PDS), the Short Pin needs to be reinstalled into its original location.

Applicable Vehicles

- 2006 model year RAV4 vehicles.

Installation Procedure The removed Short Pin is stored in the blank space of the Fuse Block in the engine compartment. During Pre-Delivery Service (PDS), install the Short Pin in the Fuse Block as shown.



NOTE:

- Removing the Short Pin cuts off power sources relating to the DOME, RADIO No. 1, and ECU-B fuses.
- The Short Pin does NOT function as a fuse, so install it only in the position shown above.
- If the vehicle is stored at the dealership after PDS, disconnect the negative (-) battery terminal to prevent battery discharge. Refer to TSB No. PG017-02, "Battery Maintenance for In-Stock Vehicles & Pre-Delivery," for battery maintenance information.

Warranty Information

OP CODE	DESCRIPTION	TIME	OFF	T1	T2
N/A	Not Applicable to Warranty	-	-	-	-

