



**Technical Service
BULLETIN**

July 11, 2006

Title:

**REPAIR MANUAL SUPPLEMENT:
STEERING COLUMN
COVER REPLACEMENT**

Models:






'06 RAV4

STEERING
ST006-06

Introduction To clarify the Repair Manual, the following procedures should be used when removal and/or installation of the steering column cover is necessary.

- Applicable Vehicles**
- 2006 model year RAV4 vehicles.

Required SSTs

ITEM NO.	SPECIAL SERVICE TOOLS (SSTs)	PART NUMBER	QTY	DRW**
1	Universal Puller Set "C"* 	09950-50013-01	1	24
COMPONENT(S) OF KIT/SET	Four (4) components from this kit/set are required:			
	• Hanger 150 (P/N 09951-05010) 			
	• Slide Arm (P/N 09952-05010) 			
	• Center Bolt 150 (P/N 09953-05020) 			
	• Claw No. 2 (P/N 09954-05020) 			

* Essential SSTs.

** Refers to drawer number in SST Storage System.

NOTE:

Additional SSTs may be ordered by calling SPX/OTC at 1-800-933-8335.

Warranty Information

OP CODE	DESCRIPTION	TIME	OFF	T1	T2
N/A	Not Applicable to Warranty	-	-	-	-



Toyota Supports ASE Certification

**Removal
Procedure****CAUTION:**

Some of these service operations affect the SRS airbag system. Read the precautionary notices concerning the SRS airbag system before servicing the steering column.

HINT:

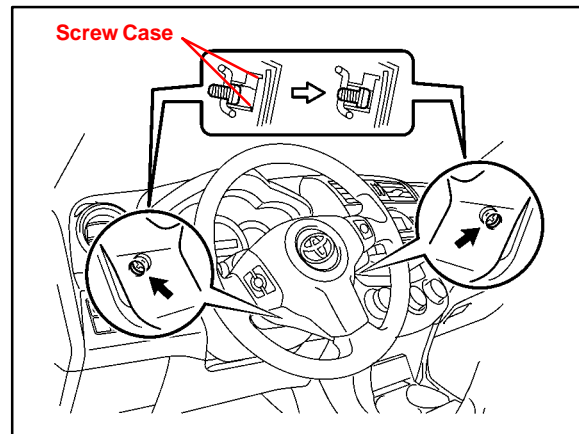
Be sure to remove the steering wheel assembly before removing the steering column cover.

1. Disconnect the cable from the negative (–) battery terminal.

CAUTION:

Wait at least 90 seconds after disconnecting the cable from the negative (–) battery terminal to prevent airbag and seat belt pretensioner activation.

2. Remove the steering pad.
 - A. Place the front wheels facing straight ahead.
 - B. Using a T30 Torx driver, loosen the two (2) screws until the groove along each screw circumference catches on the screw case.

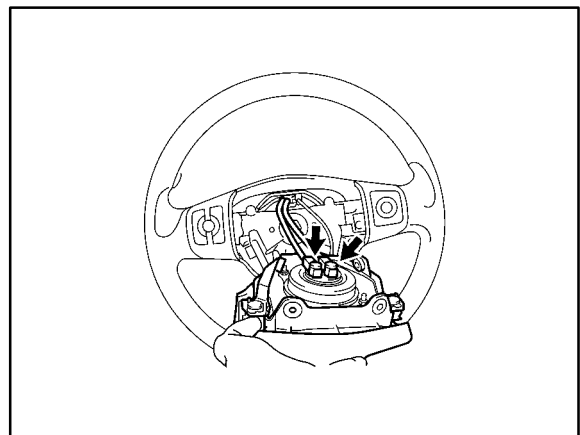


- C. Pull out the steering pad from the steering wheel and support the steering pad with one hand as shown in the illustration.

NOTE:

When removing the steering pad, do NOT pull on the airbag wire harnesses.

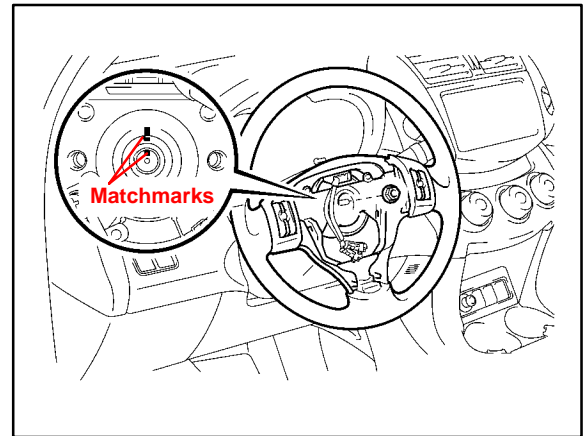
- D. Using a screwdriver, disconnect the two (2) airbag connectors.

**CAUTION:**

When handling the airbag connectors, do NOT damage the airbag wire harnesses.

Removal Procedure
(Continued)

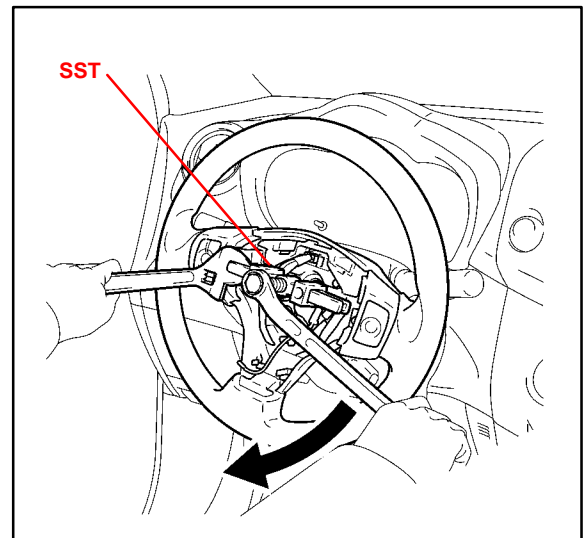
- E. Disconnect the horn connector and remove the steering pad.
3. Remove the steering wheel assembly.
 - A. Remove the nut and put matchmarks on the steering wheel and steering column.
 - B. Disconnect all connectors to the spiral cable.



- C. Using the SSTs, remove the steering wheel.
 - **SST 09950-50013**
(09951-05010, 09952-05010, 09953-05020, 09954-05021)

NOTE:

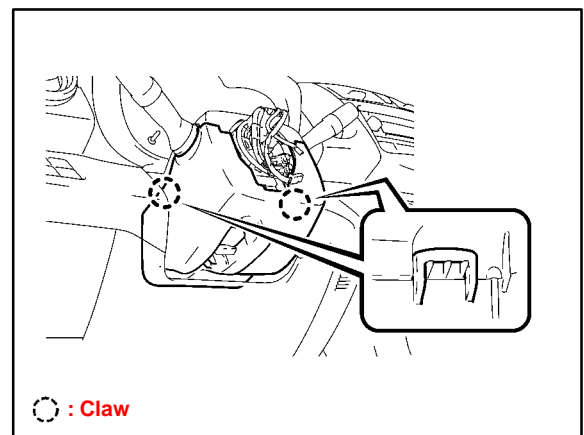
Apply a small amount of grease to the threads and tip of SST (center bolt) before use.



4. Remove the steering column cover.
 - A. Release the tilt lever.
 - B. Push the sides of the lower steering column cover inward to disengage the two (2) claws.

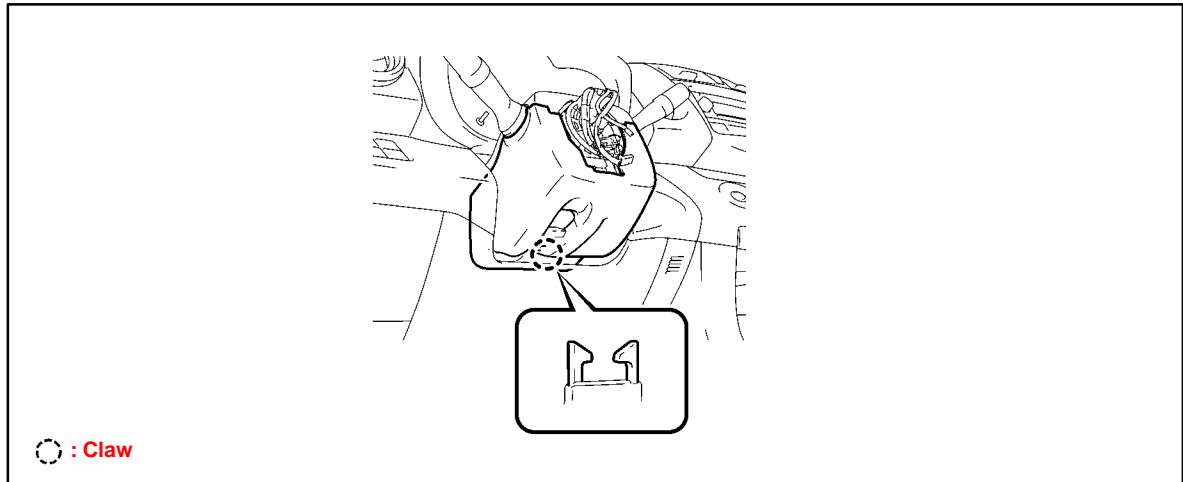
NOTE:

Removing the steering column covers incorrectly may damage the claws.



**Removal
Procedure**
(Continued)

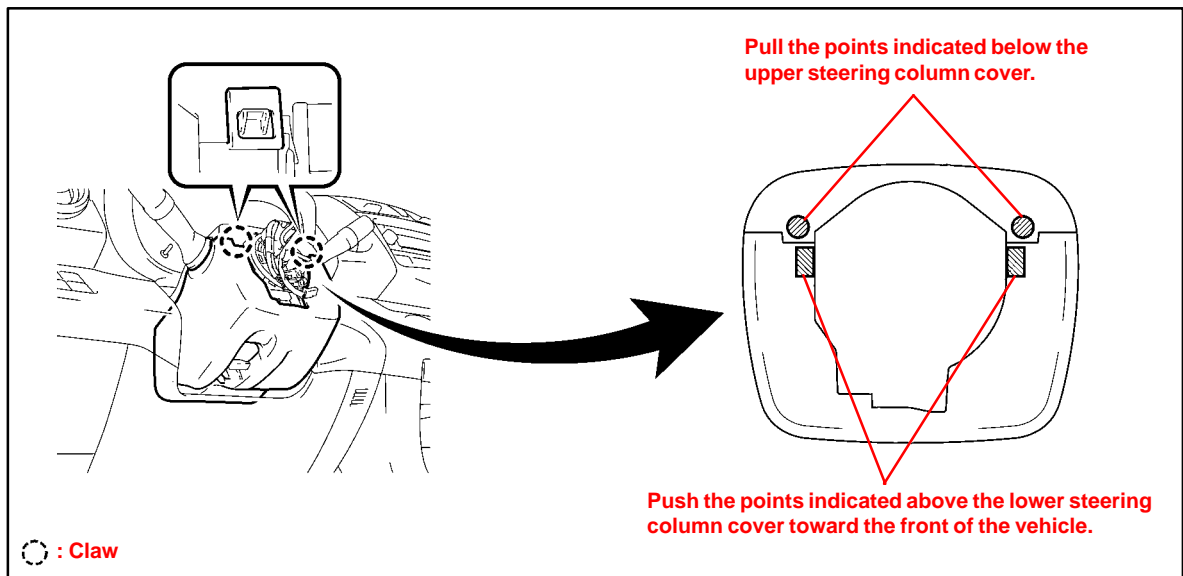
- C. Using a finger, disengage the claw through the tilt lever opening in the lower steering column cover.



- D. Disengage the two (2) claws and remove the lower steering column cover.

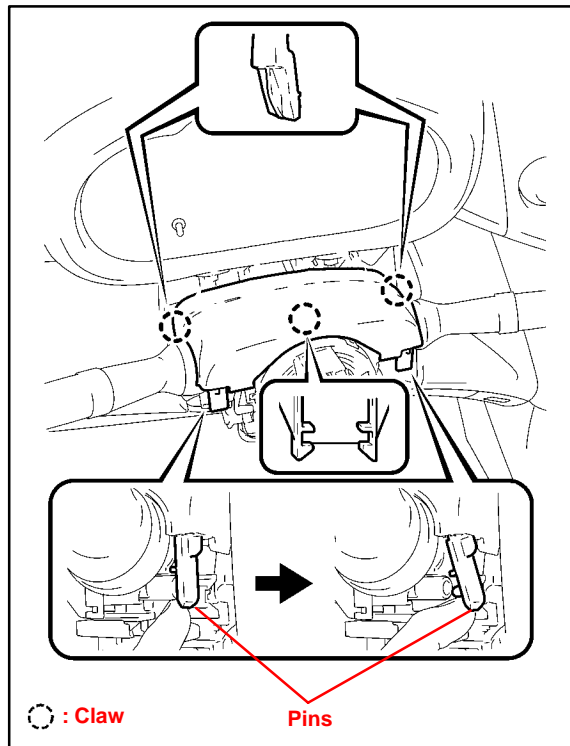
HINT:

The claws will disengage by pushing the lower steering column cover toward the front of the vehicle while pulling the upper steering column cover.



**Removal
Procedure**
(Continued)

- E. Disengage the three (3) claws and two (2) pins and separate the upper steering column cover.

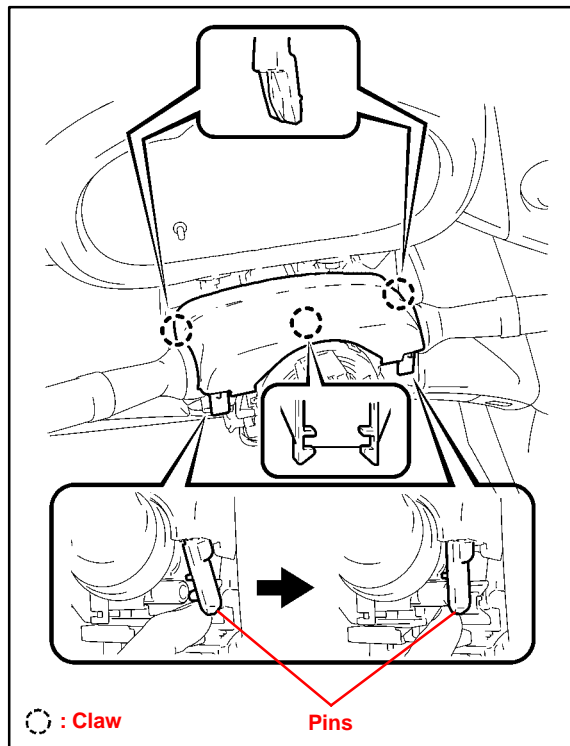
**Installation
Procedure**

1. Install the steering column cover.

NOTE:

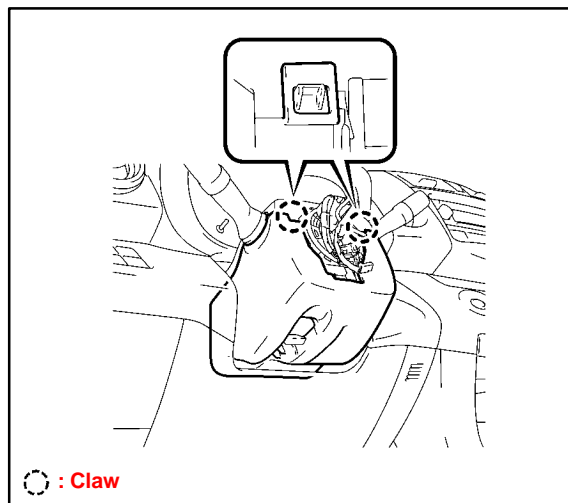
Installing the steering column covers incorrectly may create a gap between the column covers.

- A. Engage the three (3) claws and two (2) pins and install the upper steering column cover.

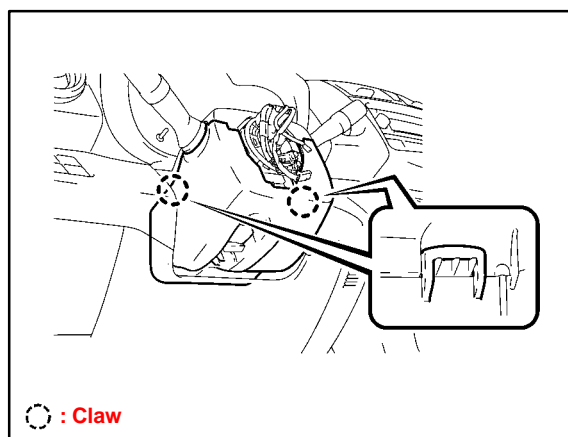


**Installation
Procedure**
(Continued)

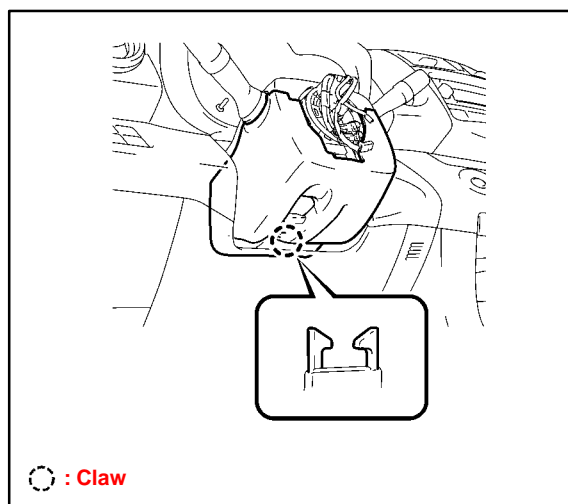
- B. Engage the two (2) claws on the upper side and install the lower steering column cover.



- C. Engage the two (2) claws on either side of the lower steering column cover.

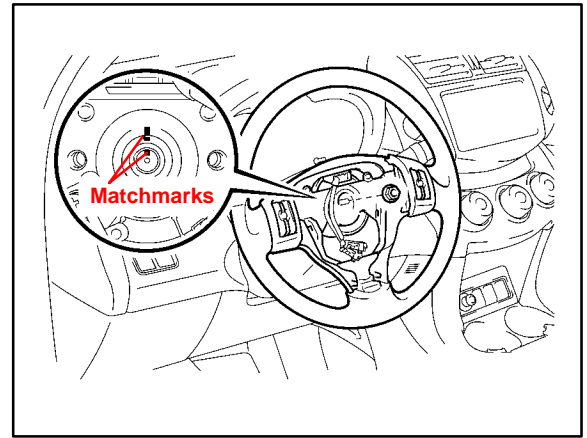


- D. Engage the claw on the bottom of the lower steering column cover.



Installation Procedure
(Continued)

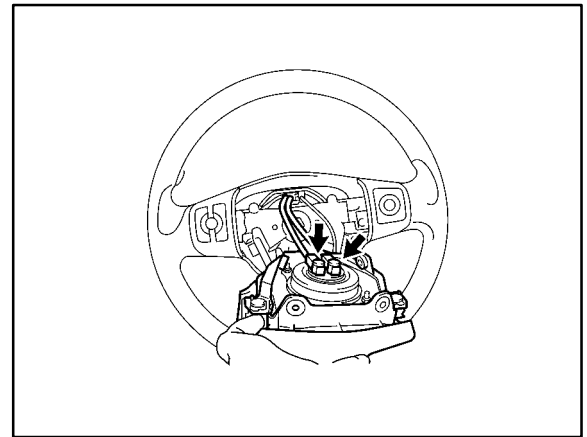
2. Install the steering wheel assembly.
 - A. Align the matchmarks and install the steering wheel onto the steering column.
 - B. Install the nut.
Torque: 50 N•m (510 kgf•cm, 37 ft•lbf)
 - C. Connect all the connectors to the spiral cable.



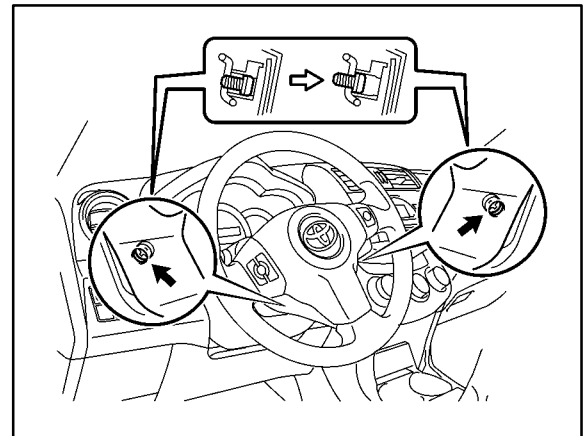
3. Install the steering pad.
 - A. Support the steering pad with one hand as shown in the illustration.
 - B. Connect the two (2) airbag connectors.

NOTE:

When handling the airbag connectors, do NOT damage the airbag wire harnesses.



- C. Connect the horn connector.
 - D. Install the steering pad after confirming that the circumference grooves of the screws are caught on the screw case.
 - E. Using a T30 Torx driver, install the two (2) screws.
Torque: 8.8 N•m (90 kgf•cm, 78 in.•lbf)
4. Connect the cable to the negative (–) battery terminal.



**Installation
Procedure**
(Continued)

5. Inspect the SRS warning light.
 - A. Turn the ignition switch ON and check that the SRS warning light comes ON for approximately six (6) seconds (primary check).
 - B. Check that the SRS warning light goes OFF approximately six (6) seconds after the ignition switch is turned ON (constant check).

NOTE:

When any of the following symptoms occur, refer to the Repair Manual Problem Symptom Tables.

- The SRS warning light comes ON occasionally after the primary check period has elapsed.
- With the SRS warning light ON, **NO** DTCs are set.
- When the ignition switch is turned from OFF to ON, the SRS warning light remains OFF.

